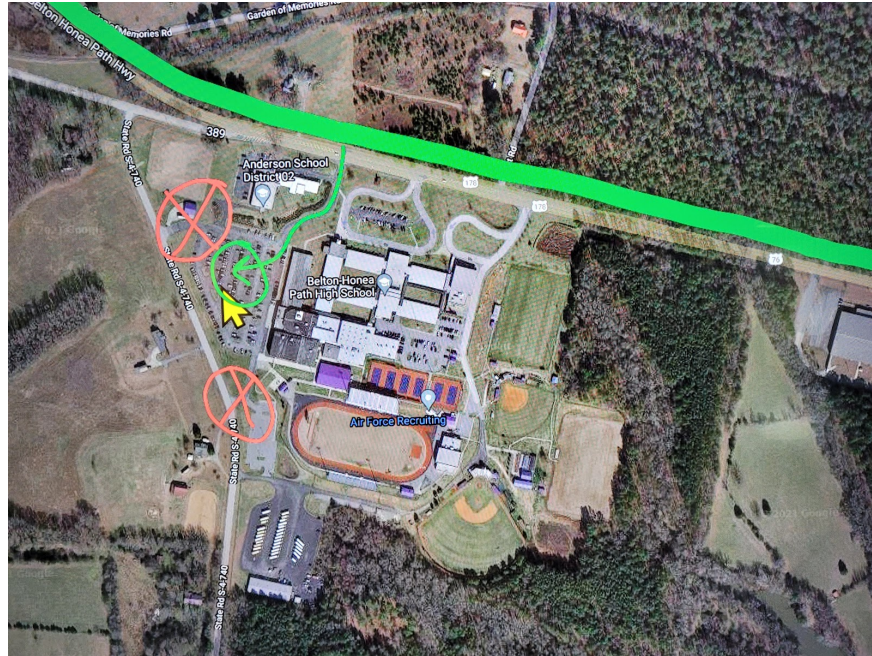


SCBDA 1A/3A UPPER STATE -- BHP -- 21 OCTOBER 2023
MAPS AND FLOW LOGISTICS

- Below is a map showing you how to ENTER our campus. Everyone should enter BHP from BHP Hwy (Hwy 76) following the green arrows/lines below.
- There will be NO entrance from the side of the parking lot where you see the red X's.
- You might want to give this map to your lead driver.



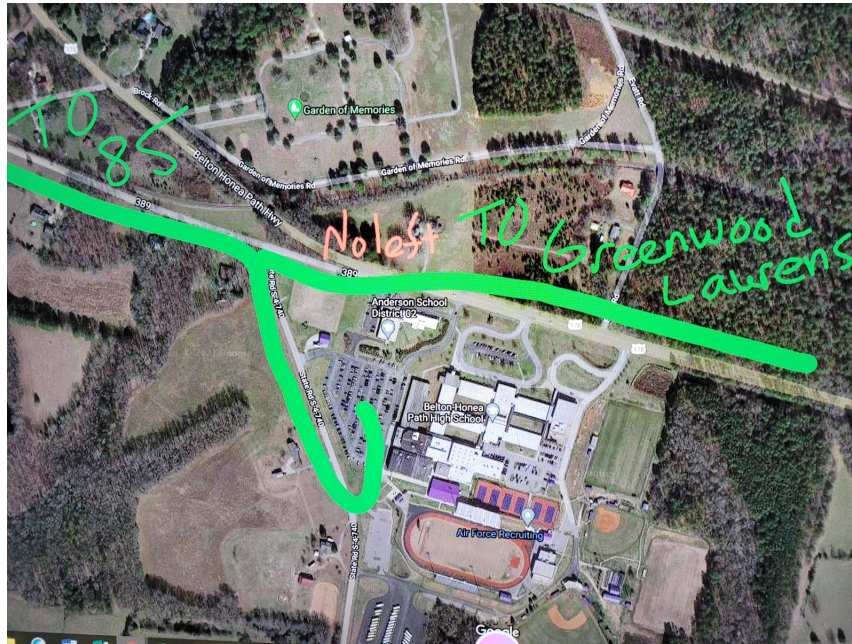
- If you carry your PROPS in a separate vehicle you are welcome to skip the bus entrance and follow this green line and stage your props behind our stadium.
- This would be an especially good idea if your props need some assembly.
- We have plenty of room behind/around our stadium and will have attendants here to help you park, back, etc.



SCBDA 1A/3A UPPER STATE -- BHP -- 21 OCTOBER 2023
MAPS AND FLOW LOGISTICS

Bus/Equipment Exit:

- All Band Buses/Equipment Vehicles will exit our parking lot via the lower gate as pictured below.
- You will be turning right out of our gate.
- When you get to the stop sign you should turn left onto Dochino Road to go towards 85/Greenville. You do NOT want to turn right and then make that sharp left onto BHP Hwy.
- You turn RIGHT to go towards Greenwood/Laurens



Spectator Parking:

- All Spectators will park in our District Bus Lot as seen below. You might consider snipping this image and sending it to your parents.



SCBDA 1A/3A UPPER STATE -- BHP -- 21 OCTOBER 2023
MAPS AND FLOW LOGISTICS

- Below you see a flow map with the parking area labeled as well as the warm up areas.
- Just park in the correct place and keep turning right. It's like the opposite of NASCAR.

