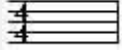


## Level I

**Length:** One and one-half minutes or less.

**Key:** Concert B-flat, E-flat with no key changes.

**Meter:** Listed below with no meter change.



**Rhythm:**

**Basic Patterns - Quarter rests on count 1 & eighth rests are not permitted.**



**Percussion Only**



## Level II

**Length:** One and one-half minute or less.

**Key:** Concert F, B-flat, E-flat with no key changes.

**Meter: SAME AS LEVEL I**

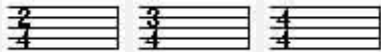
**Rhythm: SAME AS LEVEL I**

## Level III

**Length:** Two minutes or less.

**Key: SAME AS LEVEL II**

**Meter:** Listed below with no meter changes.



**Rhythm:**

**Basic Patterns**



**Percussion Only**



## Level IV

**Length:** Two and one-half minutes or less.

**Key:** Concert F, B-flat, E-flat, A-flat Major & relative minors with one key change.

**Meter: SAME AS LEVEL III** with a meter change

**Rhythm:** Basic patterns for winds & percussion.

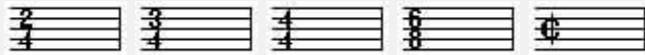


## Level V

**Length:** Three minutes or less.

**Key:** Concert F, B-flat, E-flat, A-flat Major & relative minors with up to two key changes.

**Meter:** Listed below with two meter changes.



**Rhythm:** Basic patterns for winds & percussion.



## Level VI

**Length:** Three and one-half minutes or less.

**Key:** Concert C, F, B-flat, E-flat, A-flat Major, & relative minors with up to three key changes.

**Meter:** **SAME AS LEVEL V** with three meter changes.

**Rhythm:** **SAME AS LEVEL V**