

# It's Actually Not Green Cheese . . .

SCBDA Etude No. 4

Based on Harmonic Progression similar to "Fly me to the Moon" and several Vivaldi compositions

Improvisation Practice

Swing

♩ = 152 (1)

Am7

Dm7

G7

Cmaj7



Fmaj7

Bø7

E7<sup>b</sup>9

Am

A7<sup>b</sup>9



5

Dm7

G7

Cmaj7

A7<sup>b</sup>9



9

Dm7

G7

Fm/C

C

Bø7

E7<sup>b</sup>9



13

(2) Am7

Dm7

G7

Cmaj7



17

Fmaj7

Bø7

E7<sup>b</sup>9

Am

A7<sup>b</sup>9



21

Dm7

G9

Eø7

A7<sup>b</sup>9



25

Dm7

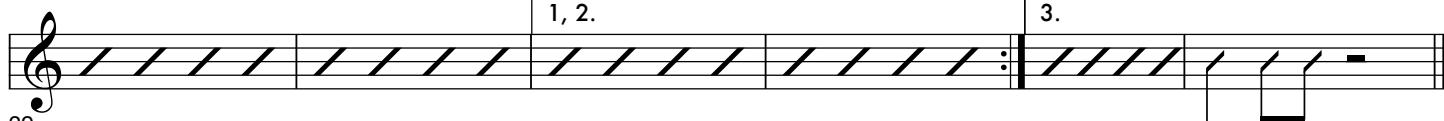
G7

Cmaj7

Bø7

E7<sup>b</sup>9

Cmaj7



29