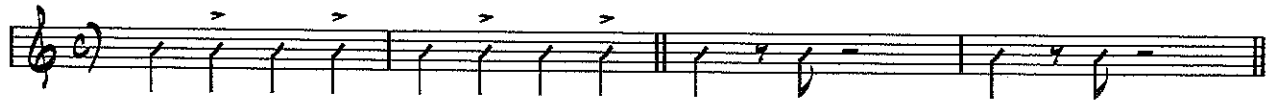


I. COMPING PATTERNS & STYLES

-SWING

FREDDIE GREEN:

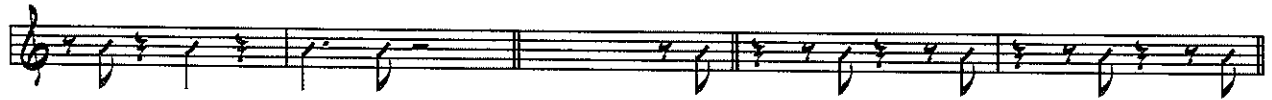
CHARLESTON RHYTHM:



CHARLESTON RHYTHM VARIATIONS:



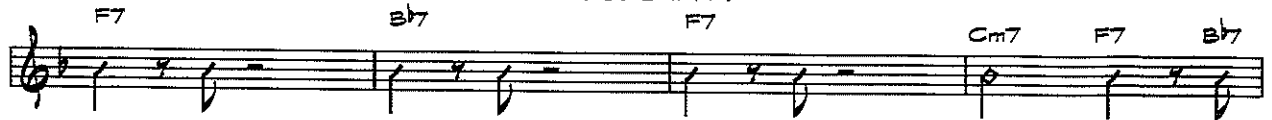
CHARLESTON RHYTHM VARIATIONS: DISPLACED HALF-NOTES:



DIALOG: LEAVING SPACE FOR SOLOIST:



POSSIBLE COMBINATION FOR BLUES IN F:



-BOSSA

2-3 CLAVE



2-3 CLAVE WITH BASS LINE

The image shows a musical score for a 2-3 Clave rhythm with a bass line. It consists of two staves of music. The top staff is in treble clef and the bottom staff is in bass clef. The music is written in a 2/3 time signature. The chords and notes are as follows:

Staff	Measure	Chord	Notes
Top	1	C6	C4, E4, G4
Top	2	C6	C4, E4, G4
Top	3	C6	C4, E4, G4
Top	4	C6	C4, E4, G4
Top	5	D9	D4, F#4, A4, C5, E5, G5
Top	6	D9	D4, F#4, A4, C5, E5, G5
Top	7	D9	D4, F#4, A4, C5, E5, G5
Top	8	D9	D4, F#4, A4, C5, E5, G5
Bottom	1	Dm9	D3, F3, A3, C4, E4, G4
Bottom	2	Dm9	D3, F3, A3, C4, E4, G4
Bottom	3	G13	G2, B2, D3, F3, A3, C4, E4, G4
Bottom	4	G13	G2, B2, D3, F3, A3, C4, E4, G4
Bottom	5	C6	C4, E4, G4
Bottom	6	C6	C4, E4, G4
Bottom	7	F/G	F3, G3, A3, C4, E4, G4
Bottom	8	F/G	F3, G3, A3, C4, E4, G4

BLUES PROGRESSION IN F FOR VOICING & COMPING PRACTICE

1

F Bb7 F Cm7 F7

5

Bb7 F Ae7 D7(9)

9

Gm7 C7 F D7(9) Gm7 C7

13

F Bb7 F Cm7 F7

17

Bb7 G7(b9)/B F/C Ae7 D7(9)

21

Gm7 C7 F D7(9) Gm7 C7

BLUES PROGRESSION IN F FOR VOICING & COMPING PRACTICE, p. 2

25

Chords: F7, Bb7, F7, Cm7, F7

29

Chords: Bb7, F7, Ab7, D7b9

33

Chords: Gm7, C7, F7, D7b9, Gm7, C7

37

Chords: F, Bb7, F7, Cm7, F7

41

Chords: Bb7, G7/B, F/C, Ab7, D7b9

45

Chords: Gm7, C7, F, D7b9, Gm7, C7